



Sitewatch[®] Anywhere

Remote Control & Monitoring Systems

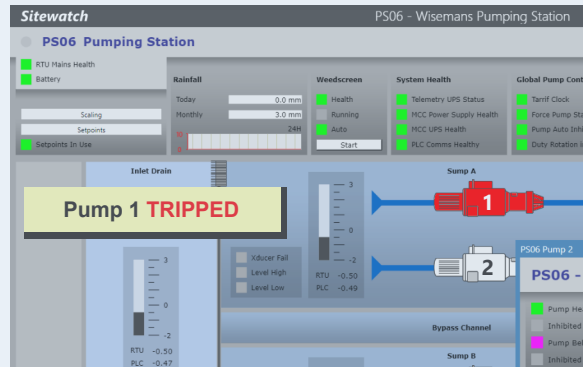
Pump Station.

Cloud based Telemetry for Water Authorities and Internal Drainage Boards.

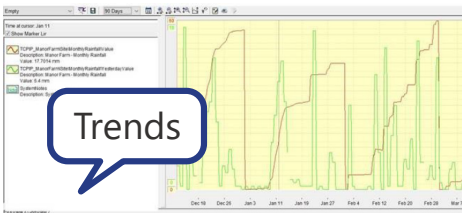
Our **low cost** monitoring and control system can be **easily retro fitted** to any pumping station.

Optimise your operations by monitoring your water levels, pump and weed screen status, electrical health and hours run.

Use Sitewatch[®] **intuitive tools** to manage your data.



Animated graphics mimic pump station status.



Trends

| Alarm Page | | | |
|-----------------|---------------|--------------------|----------------------|
| System Alarm DB | | | |
| Database | Alarm Actions | Reports & Analysis | History |
| History | Active | Unacked | Current |
| Shelved | Disabled | Configured | |
| | | | Area |
| | | | WIDS_Feldale |
| | | | Feldale - Pump 1 Sta |
| | | | Feldale - Pump 1 He |
| | | | Feldale - Extra Low |
| | | | Feldale - Pump Start |
| | | | Feldale - Sump High |
| | | | Feldale - Master RTU |
| | | | Feldale - Pump 1 Ca |

Alarm Manager

Sitewatch - Monthly Rainfall Report

Sitewatch Anywhere To Lee-Dickens Support

Rainfall Report-2020-03-01-13-00-01.XLSX 10 KB

Attached is the monthly Rainfall Report from Lee-Dickens Sitewatch.

Reports

Pump Station Assets

- MODBUS
- DNP3
- IEC-60870-5-104

Plug-in screw terminals for all serial and cable connections.

INPUTS

OUTPUTS

1

Automatic Control & Monitoring

- Pump VSDs & Inverters
- Weed Screens
- Water Levels
- Sluice Gate Position
- Motor Current
- Rainfall Totalisation

Remote Terminal Unit

GPRS • GSM • ETHERNET • RADIO

2

The **Midi-10** is an intelligent RTU offering PLC type control algorithms, designed to work in harsh environments.

A **power management module** with a sealed lead-acid battery provides UPS functionality during mains failure.

Subscribe

to view your data on any device with internet access.

3

Live and continuous monitoring via the cloud on any device via a secure application created for you.

Receive **Automated Email** and **SMS alerts**.